

AL-X1 Alarm auxiliary contact

1. Compliant standards

IEC60947-5

2. Compliant certification

CE

3. Major function

To achieve signal indication over long distance for open/close status of the circuit breaker and alarm.

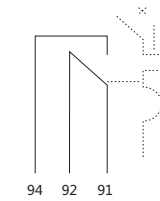
4. Parameters and performance

Table 1

| Utilization category | Rated operating voltage V | Rated operating current A |
|----------------------|---------------------------|---------------------------|
| AC-12 | AC 415 | 3 |
| | AC 240 | 6 |
| DC-12 | DC 130 | 1 |
| | DC 48 | 2 |
| | DC 24 | 6 |

Figure 1

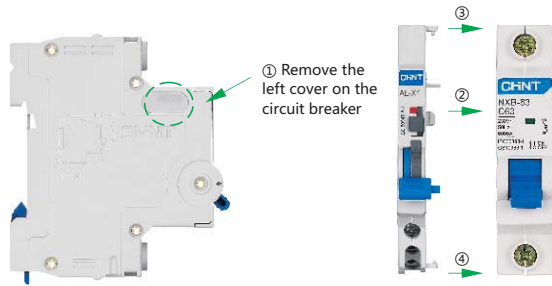
Action characteristics: Figure 1 shows the wiring diagram for auxiliary contact. When the auxiliary contact is open, terminals 91 and 94 are connected; When the auxiliary contact is closed, terminals 91 and 92 are connected. When the alarm auxiliary contact is closed, and manually opened with the handle, terminals 91 and 92 shall still be connected; when the alarm auxiliary contact is closed, and the assembled circuit trip is open due to error, terminals 91 and 92 shall be open, and terminals 91 and 94 shall be connected; Life: Operating life of alarm auxiliary contact is ≥ 10000 cycles.



5. Assembly and installation of the product

Can be assembled with NXB-63, NXB-40 series circuit breakers, with assembly diagram shown below:

Figure 2



After AL-X1 is assembled with the circuit breaker, mount them on the TH3.5-7.5 steel mounting rail.

6. Dimensions and installation sizes

Figure 3

